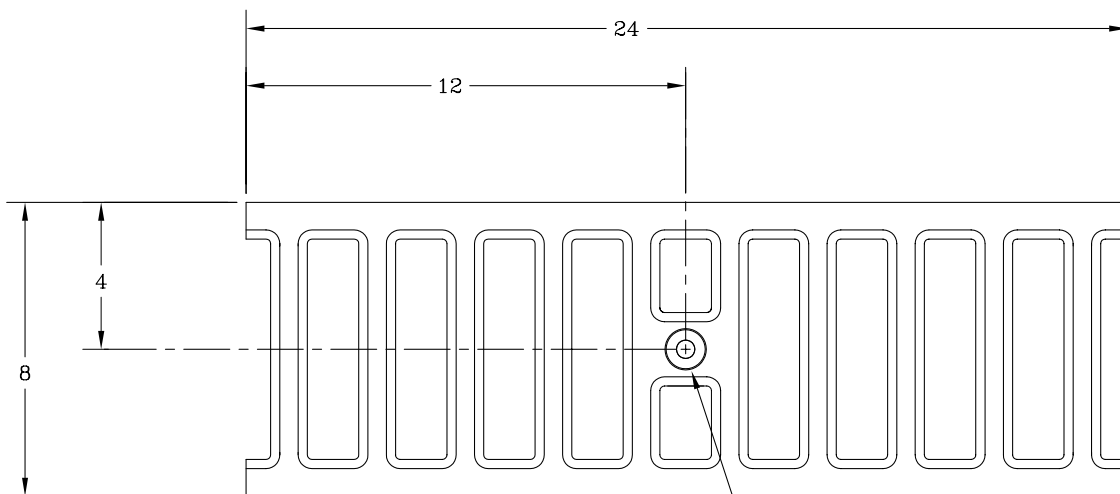
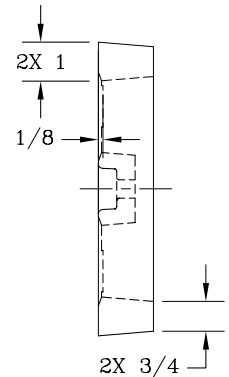
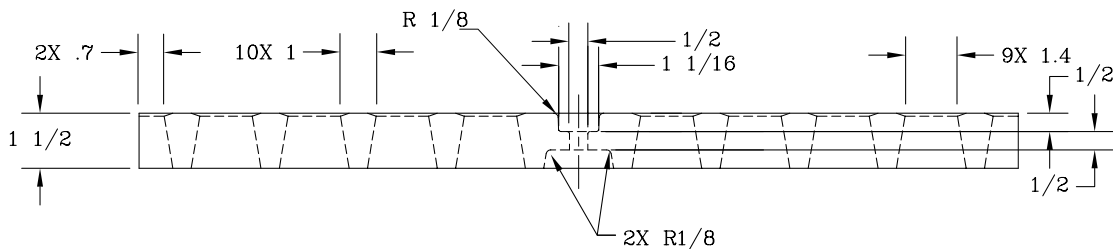


3000 SERIES
SERIOUS DRAINAGE • SERIOUS SOLUTIONS

THIS GRATE HAS 80 SQUARE INCHES OF OPEN AREA



Ø1/2 THRU W/ Ø1 1/8 X 1/2 DEEP C'BORE



NOTES:

1. MATERIAL: ASTM A 48 80-55-06 DUCTILE IRON
2. GRATE WEIGHT: 35LBS.

FINISH SPECIFICATION

- CAST GRATE : BLACK PAINT - STANDARD
HOT DIP GALVANIZE - OPTIONAL

Date: 4/12/17

Scale: NOT TO SCALE

Notes: INSTALLATION TO BE COMPLETED IN ACCORDANCE WITH MANUFACTURERS SPECIFICATIONS.



TrenchDrainSystems.com